



# Our Story

Presented by: Roberto D'Annibale

Life Is On

**Schneider**  
Electric



Our technologies ensure that **Life Is On**  
**everywhere, for everyone and at every moment.**





Energy is the base of life.

# Life Is On

when energy is on.....

We ensure energy is on by making it

- Safe
- Reliable
- Efficient
- Connected
- Sustainable



We believe access to energy is a  
**basic human right**

...and the present way of managing energy is  
**unsustainable**





1.3 billion people currently do not have access to electricity

Another 1 billion people have unreliable and intermittent supply of electricity

Source : IEA, Economist

# Megatrends are provoking a rise in Energy Demand

## URBANIZATION

+2.5B people in cities  
by 2050

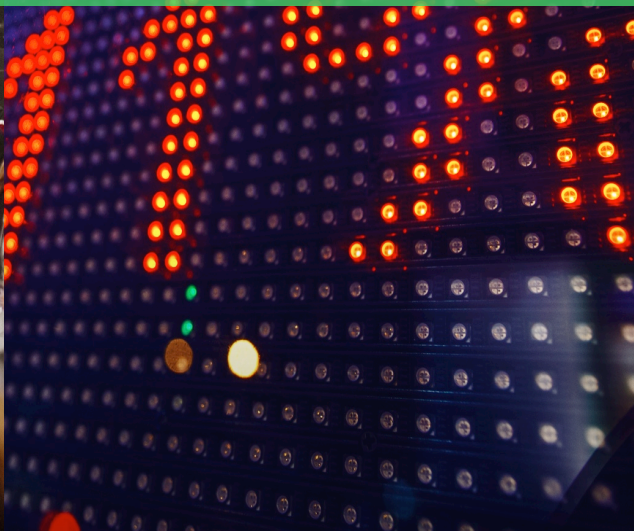
Source: United Nations, DESA



## DIGITIZATION

50B connected things  
by 2020

Source: Cisco



## INDUSTRIALIZATION

+50% Energy consumption  
by 2050

Source: IEA



# Resources in the next 40 years

$\times 1.5$

Energy consumption  
will almost double

$\div 2$

CO<sub>2</sub> emissions  
need to be halved

$\uparrow 3\times$

We have to become  
3 times more efficient

*Note: Forecast for 2050 compared to 2009 levels*



# Our World will be...

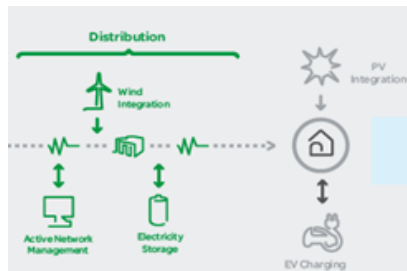
## MORE ELECTRIC

- Demand for electricity driven by sustainability, intelligent devices, and evolution of key energy consumers (motion and cooling)



## MORE DISTRIBUTED

- Provide local energy to facilities, around positive energy and micro grids, to empower users
- Falling prices of renewable energy



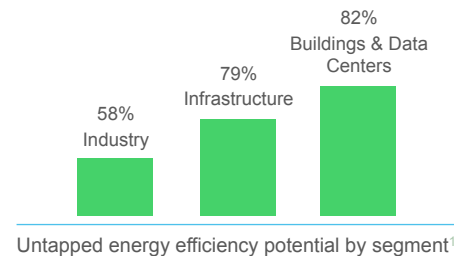
## MORE CONNECTED

- Internet of Things will connect
- at least 50bn devices by 2020



## MORE EFFICIENT

- 2/3 of energy efficiency potential remains untapped<sup>1</sup>
- Buildings, industry & infrastructure end-users and datacenters all look to improve performance, efficiency and environmental footprint



1: World Energy Outlook 2012, OECD / IEA, Internal analysis

# Schneider Electric, the Global Specialist in Energy Management and Automation

€25 billion

FY 2014 revenues

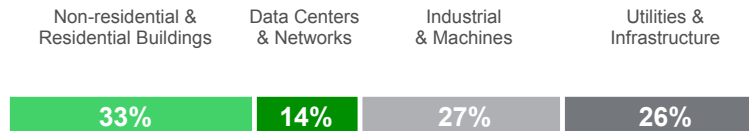
~5%

of revenues devoted to R&D

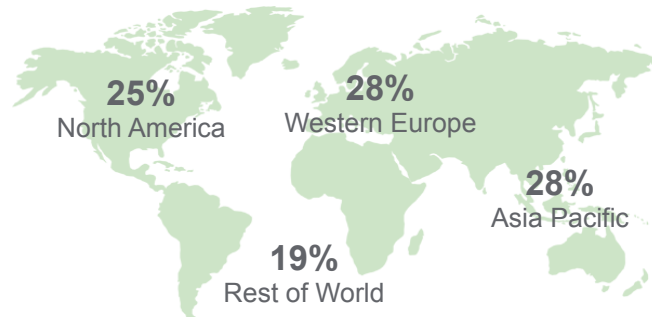
~170,000

people in 100+ countries

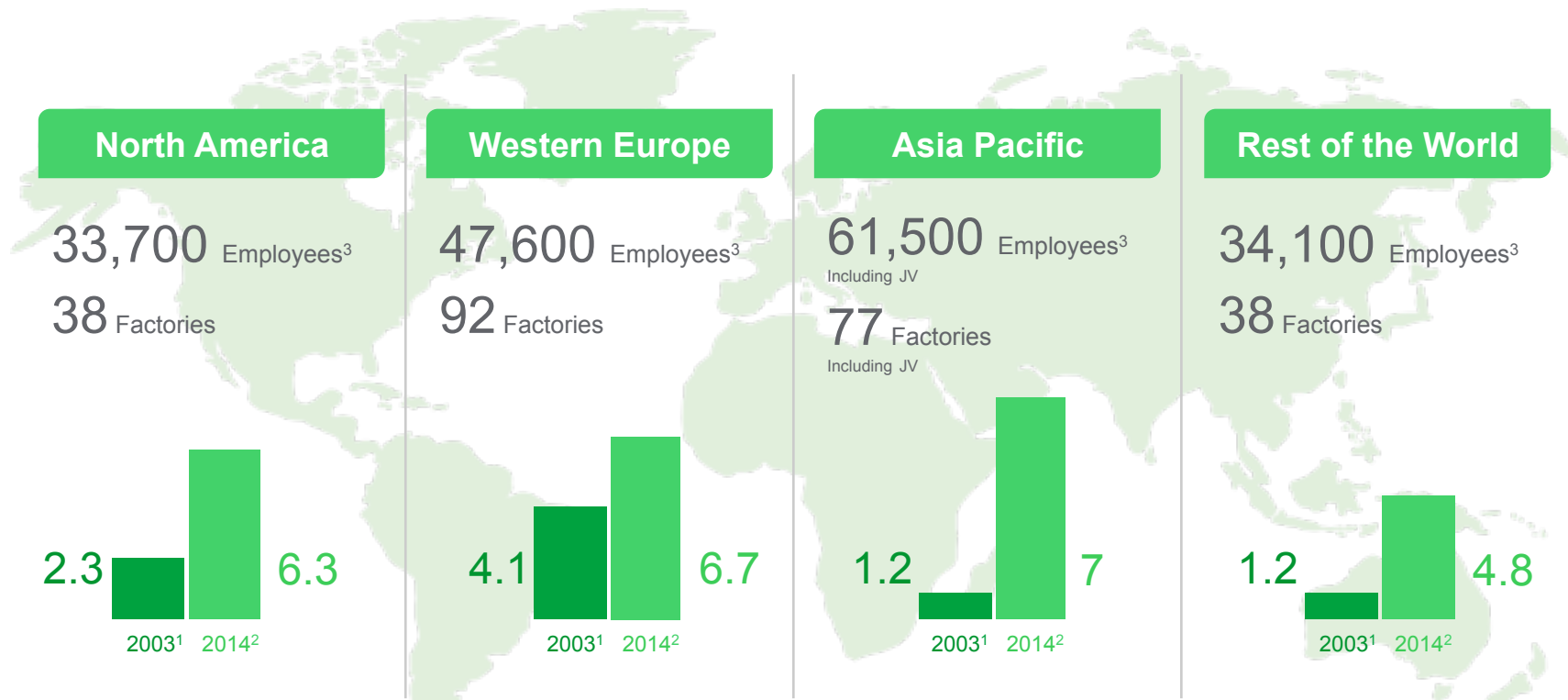
## Diversified end markets – FY 2014 revenues<sup>1</sup>



## Balanced geographies – FY 2014 revenues<sup>1</sup>



# Schneider Electric Global Business in Over 100 Countries



1: Published figures in billion € restated to reflect country-market view;  
2: Billion € pro-forma basis including LTM Sep 2014 revenue for Invensys  
3: Including Invensys, excluding Delixi and Fuji



And we believe that...

# ...access to energy is a basic human right

We want everyone on our planet to have access to safe, reliable, efficient and sustainable energy.

At Schneider Electric™, we're committed to providing innovative solutions that address this energy paradox: balancing our planet's carbon footprint and the indisputable right of everyone to quality energy



## Awards and recognitions for our impact



- 2.4 million households now have access to energy through our Access to Energy offers and business models
- 70,000 people at the bottom of the pyramid trained in energy
- 50 partners funded

Life Is On



# Sustainability is critical on our agenda

## Solutions for efficiency



Active energy efficiency,  
Energy management &  
Sustainability services



Smart grid (renewable, flexible  
distribution, electric vehicle,  
demand response)



Smart cities

## Ethics & Responsibility



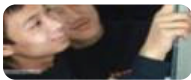
Business practices



Products and sites



Employees



Communities

## Solutions for energy gap

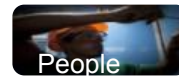
### Fostering energy access



Business



Innovation



People

Spreading access to  
reliable, affordable and  
clean energy through a  
combined approach of  
training, offers, business  
models and investment

### Fighting fuel poverty



A measured commitment:  
The Planet & Society Barometer

- Measuring sustainability
- Communicating quarterly
- Auditing annually by a third party



#9 in the Global 100

most Sustainable Corporations  
in the world in 2015





As the global specialist in  
**Energy Management and Automation**,  
we create connected technologies that .....

## RESHAPE INDUSTRIES



Confidential Property of Schneider Electric | Page 14

## TRANSFORM CITIES



## ENRICH LIVES



Life Is On

**Schneider**  
Electric



.....ensure that **Life Is On**  
**everywhere, for everyone and at every moment.**

Life Is On



**Schneider**  
Electric